

# Arizona Power Authority

---

- Body corporate and politic established by the State of Arizona in 1944
- Created to acquire and market Hoover power and other renewable resources
- 5 Commissioners appointed by the Governor to serve 6-year non-concurrent terms
- Seasoned Board of Commissioners with extensive experience in Arizona power, water and agricultural issues



- Executive Director with federal, state, municipal, co-operative and investor owned utility experience, 12 years with Authority
- Deputy Director with more than 30 years of utilities experience in planning, operations and management.
- No action other than Commission approval required for rate adjustments
- Consistent delivery of low cost hydro power to customers
- Regular monthly and special meetings for any necessary action, including rate increases

# Authority Power Customers

---

- Hoover power provided to 29 power customers located throughout Arizona
  - Electrical Districts
  - Irrigation Districts
  - Water Conservation Districts
  - Power and Water Districts
  - Municipalities
- Hoover Capacity and Energy allocated to customers pursuant to 30-year take if delivered contracts terminating in 2017
- Central Arizona Water Conservation District – Largest APA Customer
  - Responsible for management of state’s CAP water resources
  - Hoover is lowest cost pumping energy resource
  - Accounts for 30% of APA’s customer sales revenue
- Salt River Project -2<sup>nd</sup> Largest Customer
  - Provides scheduling services for Authority and customers
  - Seasonal power banking arrangements
  - Low cost supplemental power resource
  - Accounts for 13.3% of APA’s customer sales revenue
- Contractor Power Management Programs
  - Power banking
  - Monthly resource planning
  - Resource exchange/pooling
  - Supplemental power purchase on behalf of customers



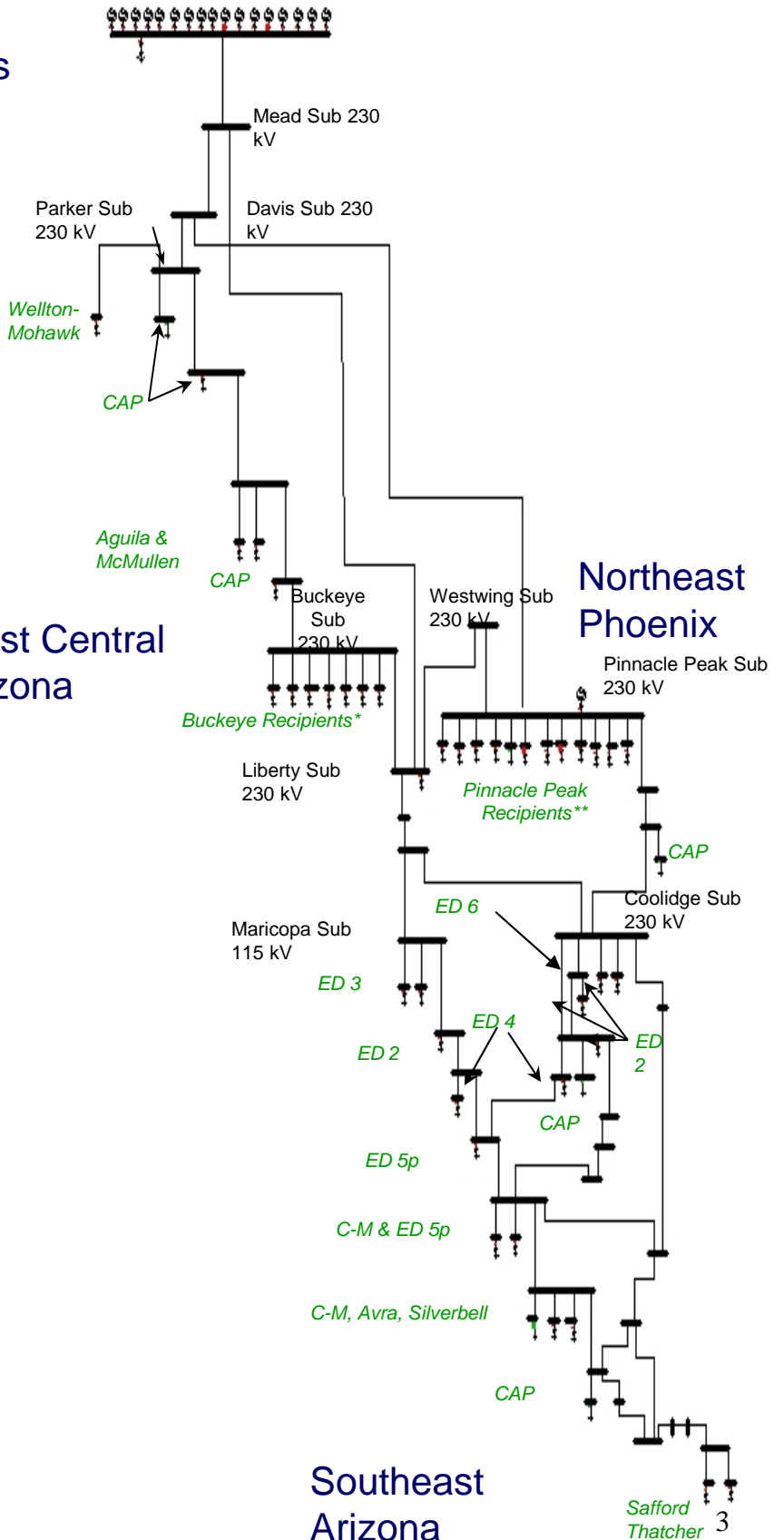
Hoover  
Generators

**APA Customer  
Delivery Points  
&  
Contract  
Transmission  
System**

West Central  
Arizona

Northeast  
Phoenix

Southeast  
Arizona



\*Buckeye Recipients:

Buckeye WCD, ED 7, ED 8, Harquahala PD, Maricopa WD, Roosevelt ID, Tonopah ID

\*\*Pinnacle Peak (PPK) Recipients:

CAP, ED 5 Maricopa, Chandler Heights ID, ED 6, RID, OWCD, Page, QCID, RWCD, SRP, STID, Wickenburg

ALLOCATION OF HOOVER POWER TO  
ARIZONA POWER AUTHORITY CUSTOMERS

Company	Total kW @ Gen.	Allocation %
Aguila I.D.	6,290	1.6684%
Avra Valley I.& D.D.	630	0.1671%
Buckeye W.C.D.	2,980	0.7905%
C.A.W.C.D.	161,600	42.8647%
Chandler Heights C.I.D.	930	0.2467%
Cortaro-Marana I.D.	6,440	1.7082%
E D #2, Pinal	19,450	5.1592%
E D #3, Pinal	15,900	4.2175%
E D #4, Pinal	19,450	5.1592%
E D #5, Pinal	14,770	3.9178%
E D #6, Pinal	8,360	2.2175%
E D #7, Maricopa	10,500	2.7851%
E D #8, Maricopa	24,200	6.4191%
Harquahala P.D.	2,490	0.6605%
Maricopa W.D.	8,840	2.3448%
McMullen Valley W.C.&D.D.	9,090	2.4111%
Ocotillo W.C.D.	2,390	0.6340%
Page	1,040	0.2759%
Queen Creek I.D.	1,770	0.4695%
Roosevelt I.D.	3,220	0.8541%
Roosevelt W.C.D.	6,760	1.7931%
Safford	2,080	0.5517%
Salt River Project	38,790	10.2891%
San Tan I.D.	520	0.1379%
Silverbell I.D.	710	0.1883%
Thatcher	1,050	0.2785%
Tonopah I.D.	1,550	0.4111%
Wellton-Mohawk I.D.	2,910	0.7719%
Wickenburg	<u>2,290</u>	<u>0.6074%</u>
Total	377,000	100.0000%

**Hoover Post 2017 Allocation of Capacity and Energy**

**HOOVER 2017 ALLOCATION**

**HOOVER 1987 ALLOCATION**

**Schedule A**

Contractor	Contingent	Firm Energy	Contingent	Firm Energy	Contingent	Firm Energy	Contingent	Firm Energy
	Capacity	(MWh)	Capacity	(Percent)	Capacity	(MWh)	Capacity	(Percent)
	(kW)		(Percent)	(Percent)	(kW)		(Percent)	(Percent)
MWD	249,948	1,227,375	12.051%	27.112%	247,500	1,291,974	12.686%	28.539%
City of Los Angeles	495,732	663,283	23.902%	14.652%	490,875	698,193	25.160%	15.423%
SCE	280,245	238,160	13.512%	5.261%	277,500	250,694	14.223%	5.538%
City of Glendale	18,178	64,325	0.876%	1.421%	18,000	67,711	0.923%	1.496%
City of Pasadena	11,108	55,175	0.536%	1.219%	11,000	58,079	0.564%	1.283%
City of Burbank	5,176	20,100	0.250%	0.444%	5,125	21,158	0.263%	0.467%
APA	190,869	613,689	9.203%	13.556%	189,000	645,989	9.687%	14.270%
CRC of Nevada	190,869	613,689	9.203%	13.556%	189,000	645,989	9.687%	14.270%
Boulder City	20,198	76,000	0.974%	1.679%	20,000	80,000	1.025%	1.767%
<b>Subtotal Schedule A</b>	<b>1,462,323</b>	<b>3,571,796</b>	<b>70.507%</b>	<b>78.900%</b>	<b>1,448,000</b>	<b>3,759,787</b>	<b>74.218%</b>	<b>83.052%</b>

**Schedule B**

Contractor	Contingent	Firm Energy	Contingent	Firm Energy	Contingent	Firm Energy	Contingent	Firm Energy
	Capacity	(MWh)	Capacity	(Percent)	Capacity	(MWh)	Capacity	(Percent)
	(kW)		(Percent)	(Percent)	(kW)		(Percent)	(Percent)
City of Glendale	2,020	3,943	0.097%	0.087%	2,000	4,151	0.103%	0.092%
City of Pasadena	9,089	3,440	0.438%	0.076%	9,000	3,621	0.461%	0.080%
City of Burbank	15,149	5,170	0.730%	0.114%	15,000	5,442	0.769%	0.120%
City of Anaheim	40,396	49,400	1.948%	1.091%	40,000	52,000	2.050%	1.149%
City of Azusa	4,039	4,750	0.195%	0.105%	4,000	5,000	0.205%	0.110%
City of Banning	2,020	1,900	0.097%	0.042%	2,000	2,000	0.103%	0.044%
City of Colton	3,030	3,800	0.146%	0.084%	3,000	4,000	0.154%	0.088%
City of Riverside	30,296	37,050	1.461%	0.818%	30,000	39,000	1.538%	0.861%
City of Vernon	22,218	26,600	1.071%	0.588%	22,000	28,000	1.128%	0.619%
Arizona	189,860	201,400	9.154%	4.449%	188,000	212,000	9.636%	4.683%
Nevada	189,860	391,400	9.154%	8.646%	188,000	412,000	9.636%	9.101%
<b>Subtotal Schedule B</b>	<b>507,977</b>	<b>728,853</b>	<b>24.493%</b>	<b>16.100%</b>	<b>503,000</b>	<b>767,214</b>	<b>25.782%</b>	<b>16.948%</b>

Subtotal Schedules A and B      1,970,300      4,300,649      95.000%      95.000%      1,951,000      4,527,001      100.000%      100.000%

**Schedule D**

New Entities	Contingent	Firm Energy	Contingent	Firm Energy	Contingent	Firm Energy	Contingent	Firm Energy
	Capacity	(MWh)	Capacity	(Percent)	Capacity	(MWh)	Capacity	(Percent)
	(kW)		(Percent)	(Percent)	(kW)		(Percent)	(Percent)
Allocated by the Secretary of Energy	69,170	151,013	3.335%	3.336%				
Allocated by States								
Arizona	11,510	25,113	0.555%	0.555%				
California	11,510	25,113	0.555%	0.555%				
Nevada	11,510	25,113	0.555%	0.555%				
	103,700	226,352	5.000%	5.000%				

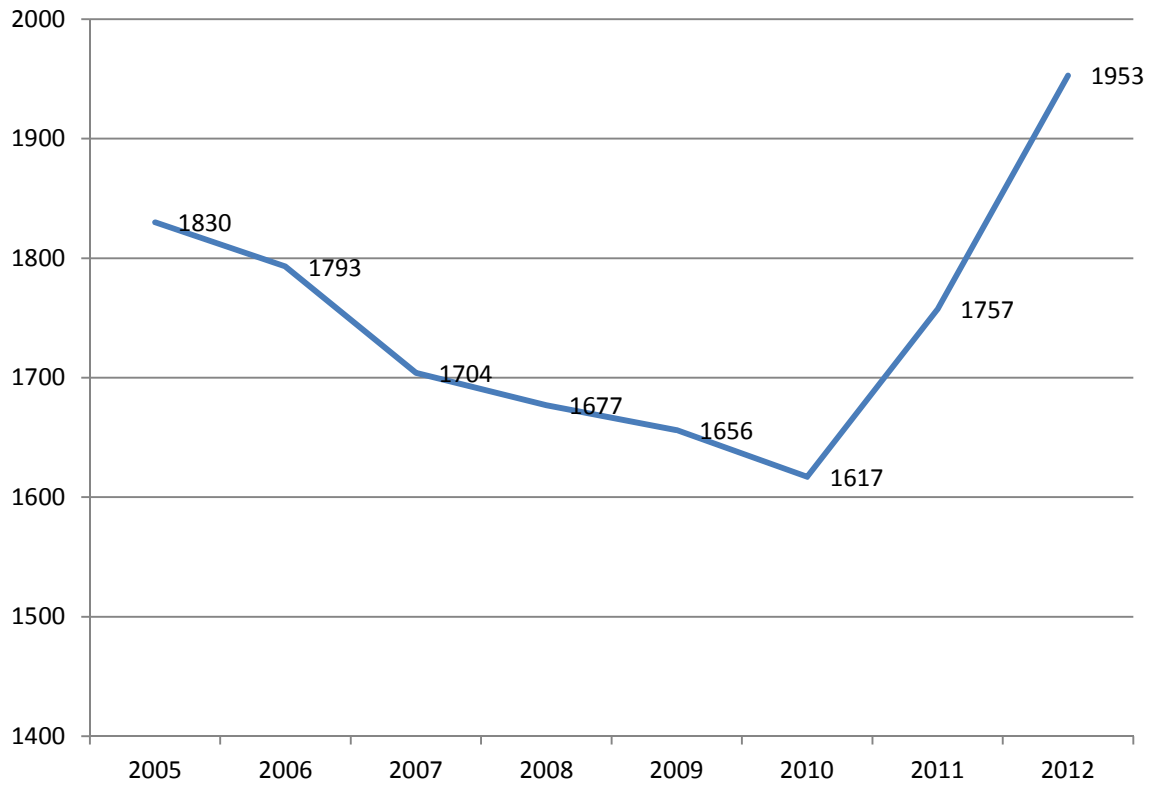
**Total Allocation to the States**

	(kW)	(MWh)	(Percent)	(Percent)	(kW)	(MWh)	(Percent)	(Percent)
Arizona	392,239	840,202	18.912%	18.560%	377,000	857,989	19.323%	18.953%
California	1,200,154	2,429,584	57.867%	53.669%	1,177,000	2,531,023	60.328%	55.909%
Nevada	412,437	1,106,202	19.886%	24.436%	397,000	1,137,989	20.349%	25.138%
	2,004,830	4,375,988	96.665%	96.664%	1,951,000	4,527,001	100.000%	100.000%

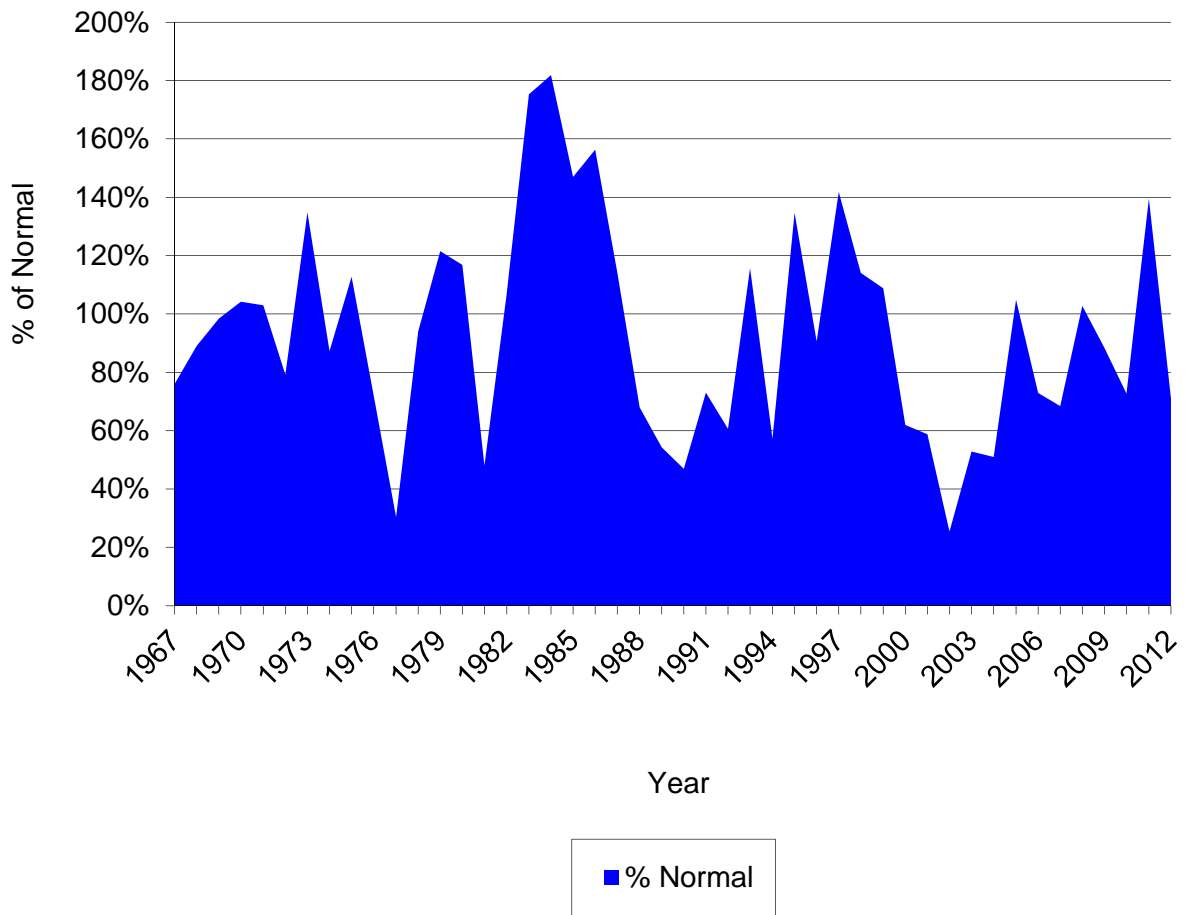
**Total      2,074,000      4,527,001      100.000%      100.000%      1,951,000      4,527,001      100.000%      100.000%**

(Including New Entities)

## Hoover Capacity With Improvements



# Upper Colorado River Annual Unregulated Inflow



**COMMISSION**

*John I. Hudson*  
**Chairman**

Stephen M. Brophy  
**Vice Chairman**

Joe A. Albo  
Dalton H. Cole  
Richard S. Walden



**Arizona Power Authority**  
1810 W. Adams St Phoenix, AZ 85007  
(602)368-4265 Fax (602)253-7970

**STAFF**

Joseph W. Mulholland  
**Executive Director**

Michael A. Gazda  
**Deputy Director**

Susan E. Angulo  
**Executive Secretary**

**Contact Email Addresses:**

Joseph W. Mulholland

[joe@powerauthority.org](mailto:joe@powerauthority.org)

Susan Angulo

[susan@powerauthority.org](mailto:susan@powerauthority.org)

Morris Christensen

[morris@powerauthority.org](mailto:morris@powerauthority.org)

Mike Gazda

[mike@powerauthority.org](mailto:mike@powerauthority.org)

Marcia Kennedy

[marcia@powerauthority.org](mailto:marcia@powerauthority.org)

Evelyn Magnusson

[evelyn@powerauthority.org](mailto:evelyn@powerauthority.org)

Robert Nieto

[robert@powerauthority.org](mailto:robert@powerauthority.org)

Linda Sullivan

[linda@powerauthority.org](mailto:linda@powerauthority.org)

Doug Fant

[doug@powerauthority.org](mailto:doug@powerauthority.org)

Cell: 602-770-5098

**WEBSITES:**

[www.powerauthority.org](http://www.powerauthority.org)

<http://2017.powerauthority.org>